

Lichfield Society of Artist Newsletter August/September 2025

Dates for your Dairy

Flower Painting Group - There will be **NO** meeting at the Holy Cross Church on Friday 1st August but there may be a Plein Air session organised nearer the time so please check the society Facebook page and WhatsApp group for updates.

Future meetings September 5th at the Holy Cross Church Community Room, Chapel Lane, Lichfield from 1.30pm to 3.30pm. (A small charge applies)

Sketching Group – The next sketching group will take place from 10am to 1pm on Thursday 14th August at The Church of St Chads, St Chads Road, WS13 7ND.

Please check the Facebook page and the WhatsApp group for future dates and venues.

Demonstration Evening – There will no meeting at Saxon Hill in August due to the school summer holidays. The next meeting will be Wednesday September the 10th. For this meeting we are planning to have 4 members of the society one in each corner of the room demonstrating their own techniques to create their artwork. The evening will give members a chance to chat while observing the artists at work in a more informal and relaxed environment to our usual demonstration evenings.

We have a few volunteers to demonstrate on the evening but are looking for a few more members to take part. If you would be willing to demonstrate your work, please email the secretary at stuartburn1971@gmail.com

Future Demonstration Evenings

October 8th – David Wilcox, Dancers in Watercolour

November 12th – Ryan Everson RBSA

December 10th - Xmas Social Evening

Painting Evening – There will be no painting evening in July and August due to the school summer holidays. The painting evenings will resume on September 24th 7.30pm at Saxon Hill Academy.

Portrait/Still Life Group – Darwin Hall, Heathcot Place, Lichfield WS13 6RQ. (near Waitrose)

Next dates August 24th, September 28th, October 26th and November 23rd

During the portrait group Dennis Harper has offered to give help and advice on framing but only if members request this. To book an appointment please contact Dennis in advance by email at dfh.art@icloud.com

Exhibition report. Summer2025.

This time we had a three-day event at our favourite venue, the Guildhall in Lichfield.

Friday 27th dawned hot and sunny, a welcome change for us after a period of strong winds which seemed to go on forever. No town Cryer this time, Adrian was already booked elsewhere. The first time we had to navigate the new security bollards in Tamworth Street, luckily, we had no problems.

Peter had a new banner made as the former was showing a lot of wear. As usual, we had plenty of help setting up, and the entrants arrived thick and fast. I was working from the entrant's paperwork this time as our computer decided to die. Luckily Chris and I had managed to finish all the labelling in time, and we had a simple filing system set up which worked very well.

It was immediately busy, I knew we had more entries and quite a few were new members which is always exciting when opening those parcels of bubble wrap. We also had a new sculptor, very welcome as Dennis Rollason was unable to attend. I missed Sue Crudgington, still unwell I'm afraid and her pottery, always popular and a steady seller.

Our Judge this time was Ian Van Zyl, who arrived with his wife Elizabeth and promptly got down to work, escorted by Dennis Harper who is a personal friend. Ian's work is wonderful, and his last piece was on view at Shenstone library. The couple live part time in the UK and South Africa, where Ian paints the animals of his home country.

Best in show, The John Sanders award, was Anthony Reeves with "Regatta, Aberdovey"

The Margaret Newman- Smith award for portraiture, was Elaine Hendon with "Dame Judy"

The Eilidh Barnardo award for drawing was Sue Brindley with "Winter study on the patio table 1", and "2"

The Dorothy Godfrey award for landscape was to Tony Morgan with "Lynmouth".

The Daphne Gick award for the natural world, was to Pat Brennan for "Bullfinch"

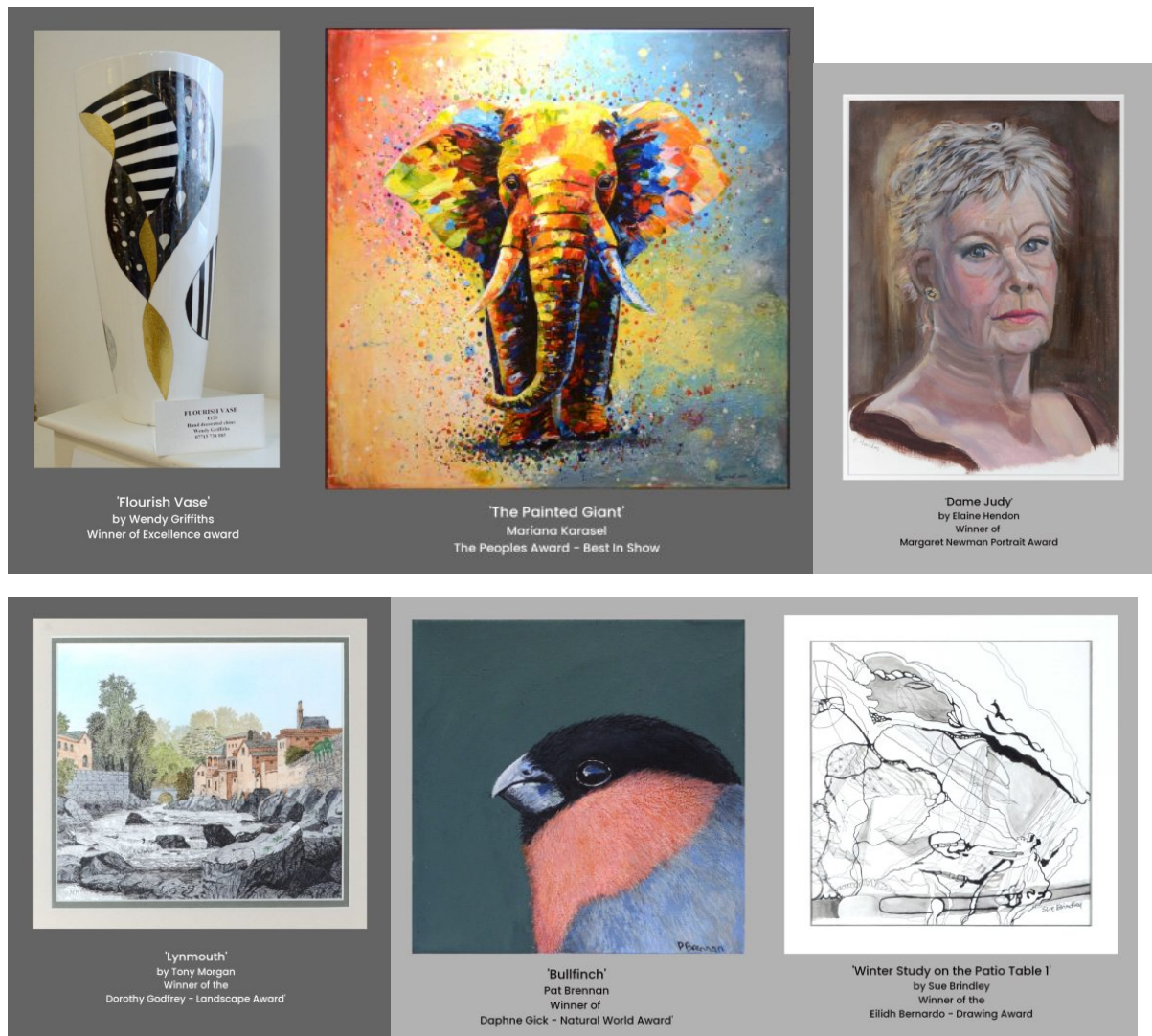
We had four awards for excellence....

Ceramic with Wendy Griffiths, for "Flourish"

Sculpture with Oz Harris for "Church on the Hill"

Embroidery with Helen Appleby for "Dreaming of Monmouthshire"

Watercolour with Ray Blundell for "The Butcher"



Jono Oates was our opener, and he introduced himself and explained that his expertise in the knowledge of Lichfield city meant that he was a popular tour guide. Jono was very entertaining and started the exhibition off excellently for us. Footfall 130 persons

Saturday 28th, another hot day, very busy as there was a craft fare above us in the Guild Hall, so stewards were kept on their toes. Footfall 500 persons

Sunday 29th A change of stewarding slots spanning 10am to 4pm. Fairly busy. Footfall 200 persons

Rundown. Total sales, £1115.50. paintings sold total 5, plus browser sales and shop items.

The winner of the public vote was Mariana Karasel with her stunning "The painted giant". Mariana is one of our new artists, so well done!

Thank you all involved in this exhibition, I couldn't do it without you! Barbara.

New Exhibition Prize Categories

Following a review of our exhibition prize categories by a sub-committee, the following list of categories will those that will be judged at the October 2025 exhibition. The intention is to recognise and encourage a wider variety of exhibited artwork.

Best in show.

Landscape or Cityscape.

Drawing / Sketching.

The Natural World.

Flowers.

Portraits.

Sculpture / Pottery / 3D.

Digital Image - must have been edited, modified or enhanced.

Newcomer - First LSA Exhibition.

Innovation or Creativity. The 'WOW' Award.

Visitors' Choice.

Awards of Excellence in any Category. Judge's choice. A maximum of three in any exhibition.

*In exceptional cases the Judge may make an award to the same exhibit in more than one category, but no more than two categories.

** If there are only a small number of entries in a particular category it is at the Judge's discretion whether or not an award is made.

FUSE Festival Report – After the success of taking part in last years FUSE Festival we made the decision to take part again this year. This year was the 25th year of the FUSE Festival and took place on the 11th, 12th and 13th of July in Beacon Park.

A few of us meet up on the Friday morning to set up the tables and chairs for the workshops on the Saturday and to set up the display boards ready for the exhibition on the Sunday.

On the Saturday we held workshops from 12pm to 5pm. Firstly, we held print making workshops followed by an air-dry clay workshop. Numbers attending the workshops was down on last year, but this was probably because of how hot it was. It was very difficult conditions to work in, so thanks need to go to all those that helped. We were also joined by the Lichfield Urban Sketchers.

On the Sunday we decided to hold an exhibition approximately 60 paintings were exhibited by 11 members of the society. There were items in the browser and 3 members had items in the shop for sale. We didn't sell any paintings, but we did sell 10 items from the shop and 1 item from the browser. Total sales £78. The exhibition was a great success with a steady stream of visitors all day. There were also demonstrations all day from 5 members of the society including Ray Blundell, Lynne Kirby, Arriane Page, Pete Wilding and Stuart Burn.

We would like to thank all those that helped to make our participation in FUSE possible.

Hopefully we will get the opportunity to take part again next year.



Instagram – The Society now has an Instagram account which can be found by following this link <https://www.instagram.com/lichfieldsocietyofartists/>

If you have your own Instagram Account please follow and share the society account and also tag the society in any of your own posts this will help increase the societies followers and visibility on Instagram.

Kind regards,

Stuart Burn